

SAON's Arctic ROADS

Sustaining Arctic Observing Networks (SAON)'s Arctic Roadmap for Observing and Data Systems (Arctic ROADS) is a new effort to develop partnerships and well-defined plans for improving observing and data systems to support societal benefits. SAON was created as a joint initiative of the Arctic Council and the International Arctic Science Committee, it also supports the Arctic Data Committee and the Committee on Networks. SAON's vision is to advance a connected, collaborative, and comprehensive long-term pan-Arctic observing and data system of systems that serves societal needs.

Purpose of Arctic ROADS

The purpose of Arctic ROADS is to build new partnerships and strengthen existing partnerships between observers, processors, users, and funders to improve Arctic observing and data systems. To advance this purpose, SAON invites Expert Panels (EPs) to form around a topic, region, or issue to develop robust plans. Arctic ROADS recognizes that Indigenous Knowledge Systems function as Arctic observing systems. To respect Indigenous knowledge and sovereignty, the process works towards co-production with Indigenous leadership in every phase of the ROADS process.

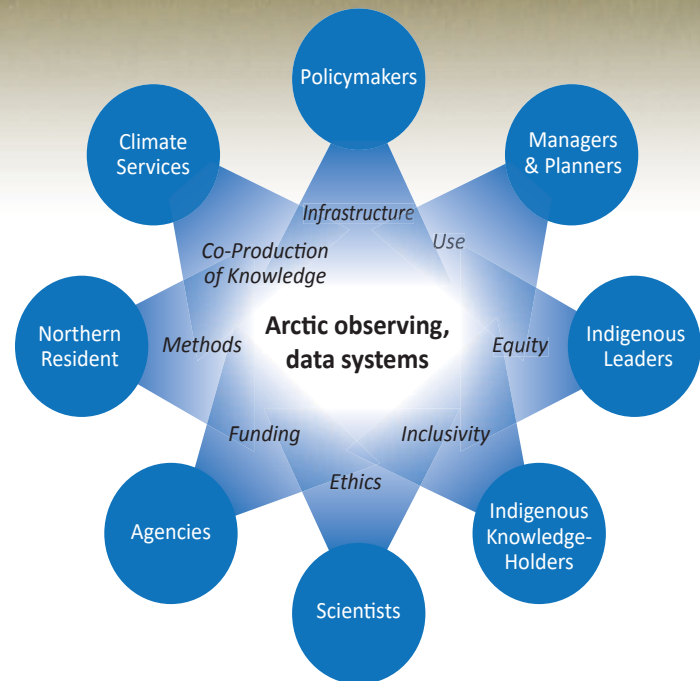
Arctic ROADS Guiding Principles

Arctic ROADS Guiding Principles assure integrity and benefit from the process. They are:

1. Indigenous Peoples' equitable partnership and funding for their active participation is critical to ROADS;
2. All aspects of the ROADS process should support broadly shared benefit from the observing and data systems;
3. The ROADS process should complement and integrate the current planning approaches used by existing networks (regional to global), activities, and projects;
4. ROADS should support stepwise development through a flexible and evolving structure that allows grassroots identification of foci.

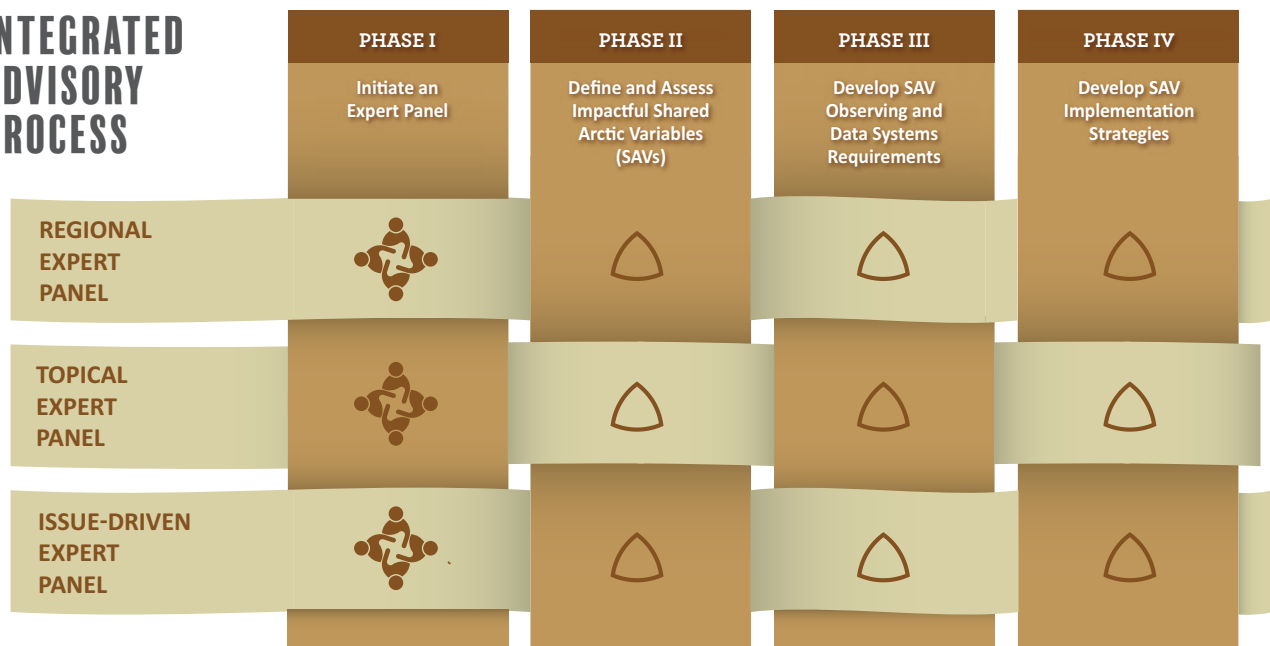
Impact of SAON's Arctic ROADS

SAON envisions a future where observing and data systems are developing under strong partnerships that create societal benefit for all engaged in decision making and research in the region and beyond. Arctic ROADS will serve as a platform to center Indigenous leadership, advance protocols and practices, and realize systemic change around implementation strategies, including data ethics, infrastructure, funding structures, use/reuse of data, technology, decision-making, societal benefit assessments, and Indigenous-led research. SAON - through ROADS, associated initiatives, and organizers of Arctic Observing Summits will lead these efforts.



INTEGRATED ADVISORY PROCESS

EXAMPLE FOCI FOR EXPERT PANELS



ROADS Advisory Panel will facilitate integration across Expert Panels at each phase.



A small group of experts initiate the Expert Panel process



Phase not started



Phase partially complete



Phase complete

Structure

Arctic ROADS will develop stepwise through grassroots efforts in the form of Expert Panels (EP). Through a four-phase Integrated Advisory Process, each EP will develop observing and data management plans to support decision-making and research, addressing the who, what, where, why, how, and when. EPs will be supported in their work by the Arctic ROADS Advisory Panel (AP) - an international group appointed by SAON to guide the process and uphold the Guiding Principles. The AP and EPs will collectively develop planning principles, tools, and processes that are effective, culturally-responsive, ethical, and equitable. The AP will provide critical feedback and facilitate connections between EPs along with the broader observing community.

Indigenous Leadership

Arctic ROADS reflects a recognition of the long-standing Indigenous leadership within Arctic observing, especially within the Arctic Observing Summit. The AP is co-chaired with Aleut International Association, with 4 of the 17 members representing Indigenous groups. SAON is actively recruiting for Indigenous representation from Canada and Europe. Each EP should have adequate Indigenous leadership and representation and follow Indigenous ethical frameworks.

Expert Panel Process

Phase I - Initiate an Expert Panel

An initial 2-3 person expert group will propose an EP with scope, purpose, gaps, societal benefit, and recommendations for a full 10-12 person panel.

Phase II - Define and Assess Impactful Observables

The EP will convene and co-develop the “why” of the plan, specifically a cultural and policy relevant societal benefit analysis and potential impacts.

Phase III - Develop Observing and Data Systems Requirements

The EP will then develop the “who, what, where, how, and when” details of the plan.

Phase IV - Develop Implementation Strategies

The EP will develop strategies to implement their well-defined plan, including specific commitments. The EP and AP will work to get the plan adopted and implemented.

How to Participate in SAON ROADS

Participation is open to new and existing projects and partnerships in both the EP process and surrounding discussions.

<https://roadsadvisorypanel.org/>

Email: info@roadsadvisorypanel.org